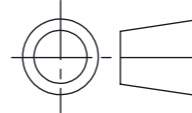

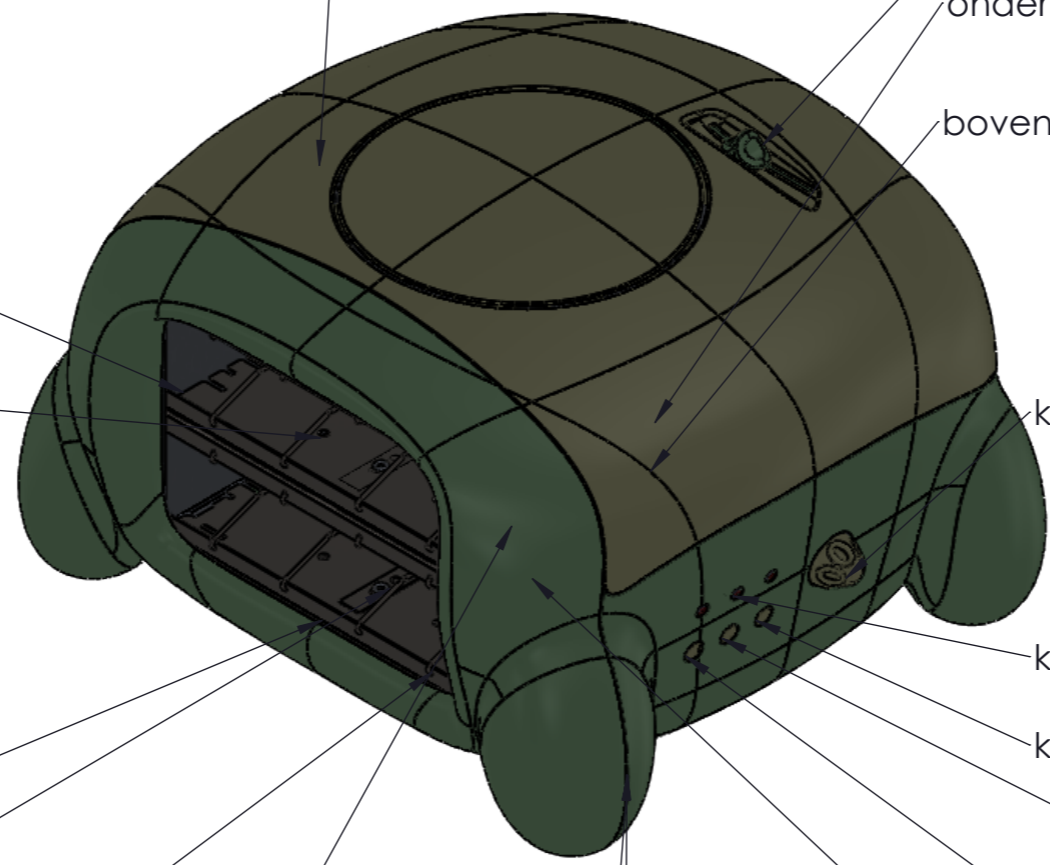


| | | | |
|---|----------------------------------|------------|---|
| Opp. ruwheid (zie NEN 3634) | Maattoleranties NEN-ISO 2768- | MATERIAAL: | Vorm- en plaatstol. (zie NEN-ISO11010) |
|  | SCHAAL: | GETEKEND: | OPMERKING: |
| | MAATEENHEID: mm | AFDELING: | |
| | DATUM: | GEZIEN: | NUMMER: |
|  | | BENAMING: | A3 |

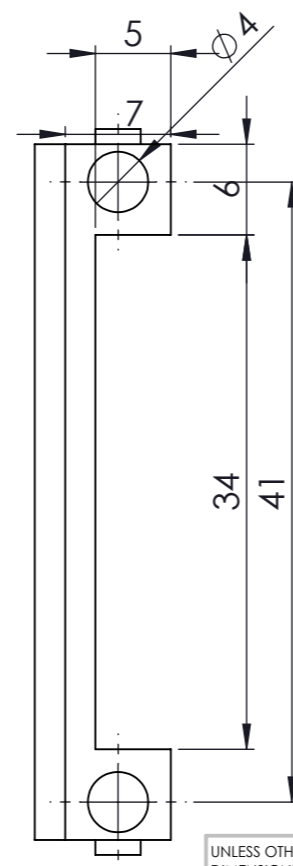
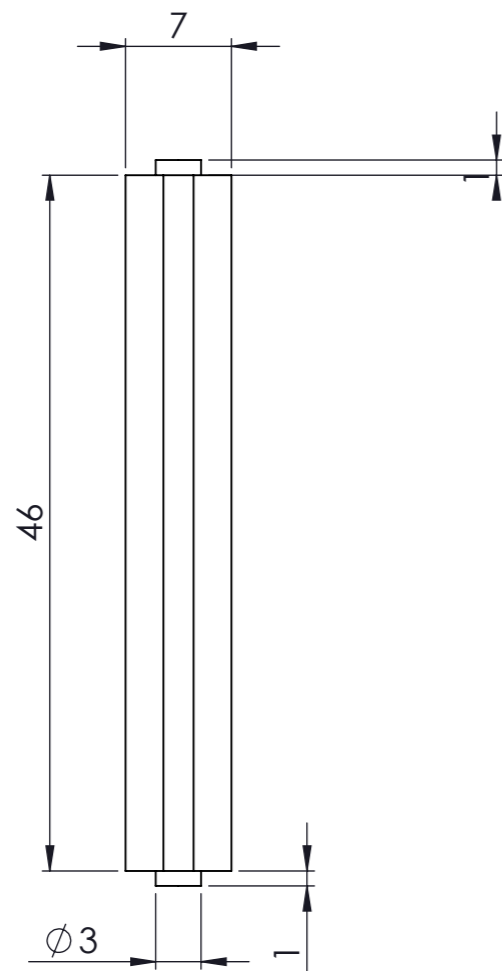
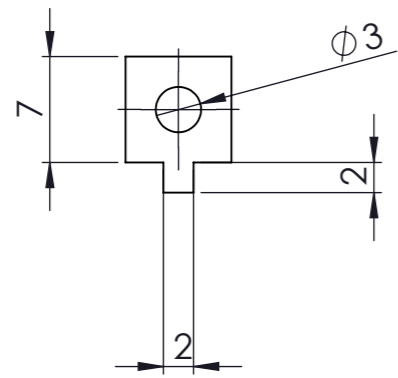
| ITEM NO. | PART NUMBER | DESCRIPTION | QTY. |
|----------|------------------------------|-------------|------|
| 1 | onderkant broodrooster 10.3 | | 1 |
| 2 | bovenkant broodrooster 10.3 | | 1 |
| 3 | linkerkant broodrooster 10.3 | | 1 |
| 4 | voorkant broodrooster 10.3 | | 1 |
| 5 | sk assembly | | 1 |
| 6 | schuif knop 10.1 | | 1 |
| 7 | knop assembly 1.2 | | 1 |



sk assembly sk assembly sk assembly sk assembly knop assembly 1.2 knop assembly 1.2 knop assembly 1.2 knop assembly 1.2 knop assembly 1.2

voorkant broodrooster 10.3 Part10^knop assembly 1.2

| | | | |
|--------------------------------|----------------------------------|--------------------------|---|
| Opp. ruwheid (zie NEN 3634) | Maattoleranties NEN-ISO 2768- | MATERIAAL: plastic | Vorm- en plaatstol. (zie NEN-ISO11010) |
| | SCHAAL: 1/2 | GETEKEND: Cornelis Dirks | OPMERKING: |
| | MAATEENHEID: mm | AFDELING: IPO | |
| | DATUM: 12-10-17 | GEZIEN: | |
| | | BENAMING: broodrooster | NUMMER: 10.3 |
| | | | A3 |



| | | | | | | | | | | |
|--|------|-----------|-----------|--|------------------------------------|--|----------------------|--|----------------------|--|
| UNLESS OTHERWISE SPECIFIED: DIMENSIONS ARE IN MILLIMETERS | | | FINISH: | | DEBURR AND BREAK SHARP EDGES | | DO NOT SCALE DRAWING | | REVISION | |
| SURFACE FINISH: | | | | | | | Cornelis Dirks | | | |
| TOLERANCES: | | | | | | | TITLE: | | broodrooster | |
| LINEAR: | | | | | | | | | | |
| ANGULAR: | | | | | | | | | | |
| | NAME | SIGNATURE | DATE | | | | | | | |
| DRAWN | | | | | | | | | | |
| CHK'D | | | | | | | | | | |
| APPV'D | | | | | | | | | | |
| MFG | | | | | | | | | | |
| Q.A | | | | | | | | | | |
| | | | MATERIAL: | | | | DWG NO. | | broodrooster 10.3 A3 | |
| | | | staal | | | | SCALE:1:5 | | SHEET 3 OF 3 | |
| | | | WEIGHT: | | | | | | | |